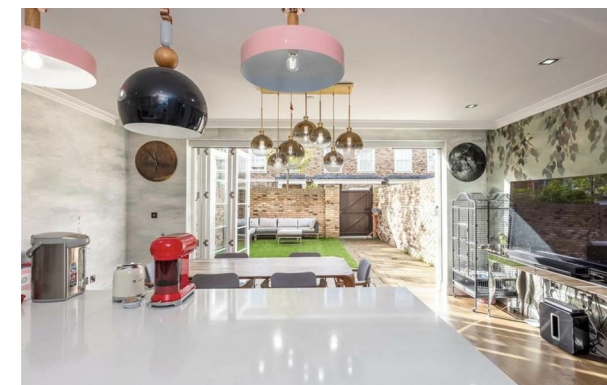




CHASE APARTMENTS
LONDON



Palladian Gardens, London W4 2ER

Asking Price £2,500,000

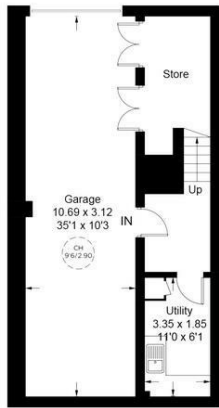
- Five-bedroom modern townhouse in the prestigious Chiswick Gate development
- Bi-fold doors opening onto a landscaped private rear garden
- Bedroom currently arranged as a walk-in dressing room
- Short walk to Chiswick House & Gardens, the River Thames and Chiswick High Road
- Approx. 3,000 sq ft of luxury living space arranged over five floors
- First-floor reception room with private terrace
- Study, guest cloakroom and excellent built-in storage
- Exceptional open-plan bespoke kitchen with breakfast bar and dining area
- Three en-suite bedrooms plus additional family bathroom
- Direct access to double-length private garage (parking for two cars + storage)

Grosvenor Waterside, 32 Gatliff Road, Belgravia, London, SW1W 8QN
02077225022

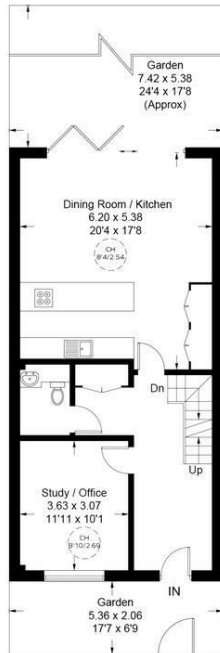
<http://www.chaseapartments.com/>

Chiswick Gate

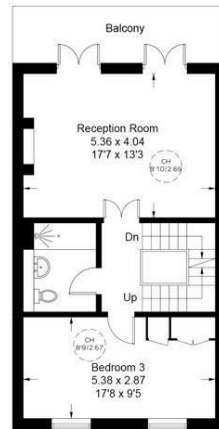
Approximate Gross Internal Area = 272.7 sq m / 2935 sq ft
Including Limited Use Area (3.4 sq m / 36 sq ft)



Lower Ground Floor



Ground Floor



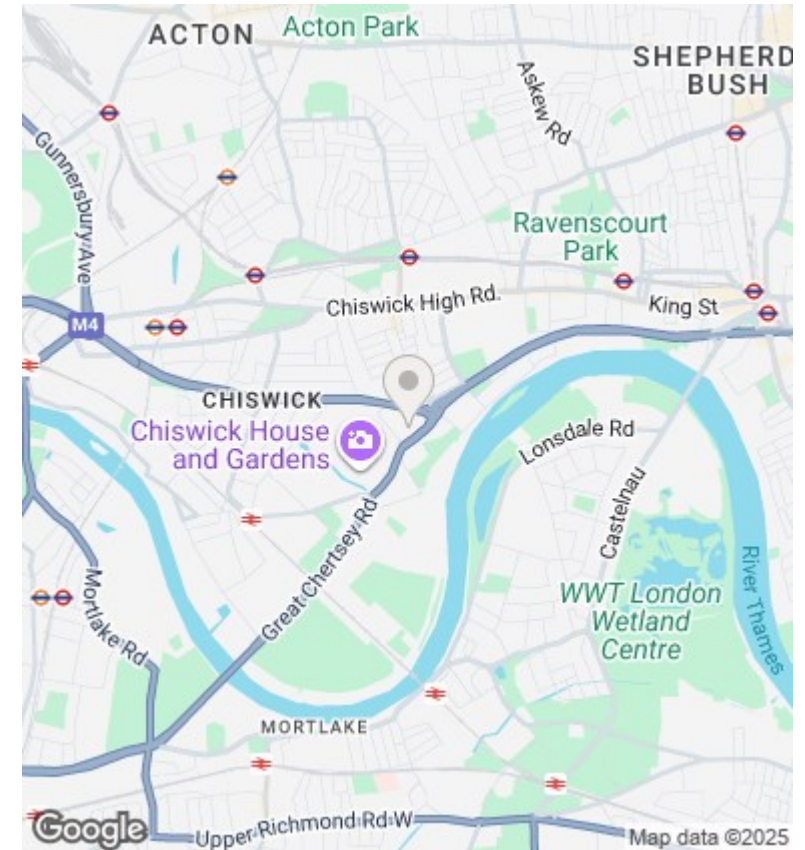
First Floor



Second Floor



Third Floor



Viewings

Viewings by arrangement only.
Call 02077225022 to make an appointment.

Council Tax Band

H

EPC Rating:

B

Energy Efficiency Rating		
	Current	Potential
Very energy efficient - lower running costs		
(92 plus) A		
(81-91) B	88	88
(69-80) C		
(55-68) D		
(39-54) E		
(21-38) F		
(1-20) G		
Not energy efficient - higher running costs		
England & Wales	EU Directive 2002/91/EC	